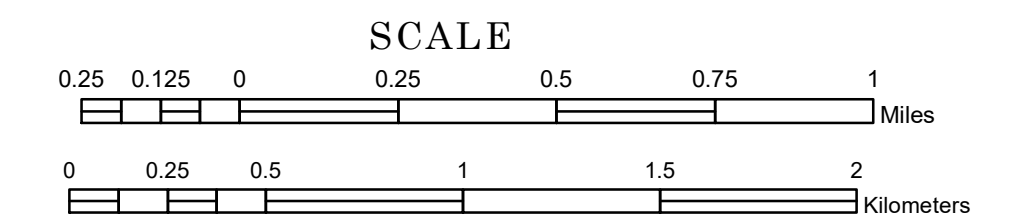


# TOWNSHIP OF ALBORN

PREPARED BY THE  
MINNESOTA DEPARTMENT OF TRANSPORTATION  
OFFICE OF TRANSPORTATION SYSTEM MANAGEMENT

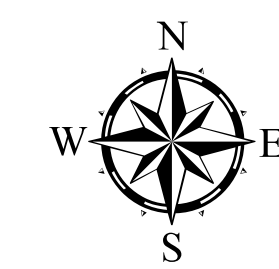
IN COOPERATION WITH  
U.S. DEPARTMENT OF TRANSPORTATION  
FEDERAL HIGHWAY ADMINISTRATION



1 in = 1,600 ft

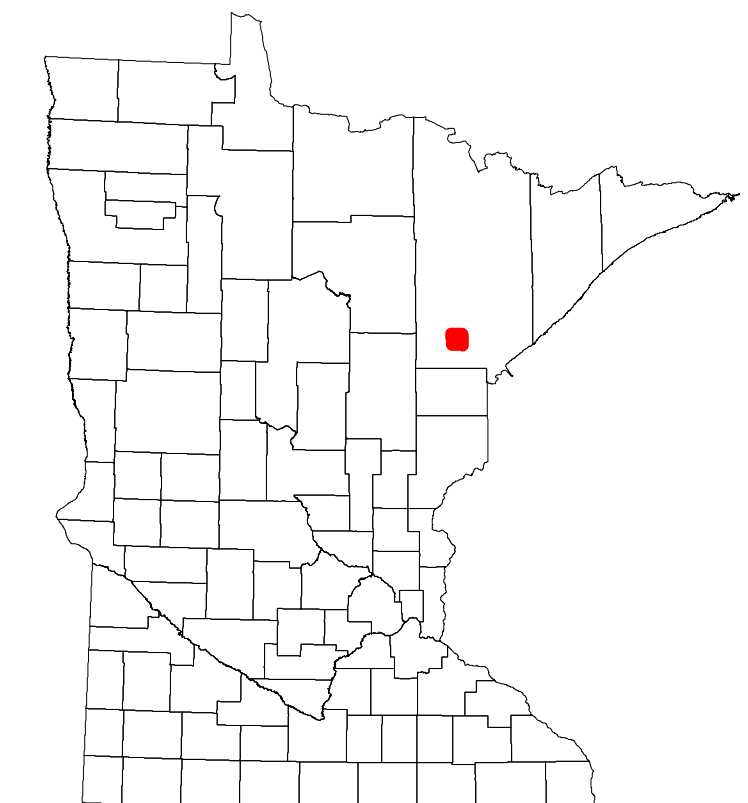
2022

Projection:  
Transverse Mercator  
NAD 1986  
UTM Zone 15

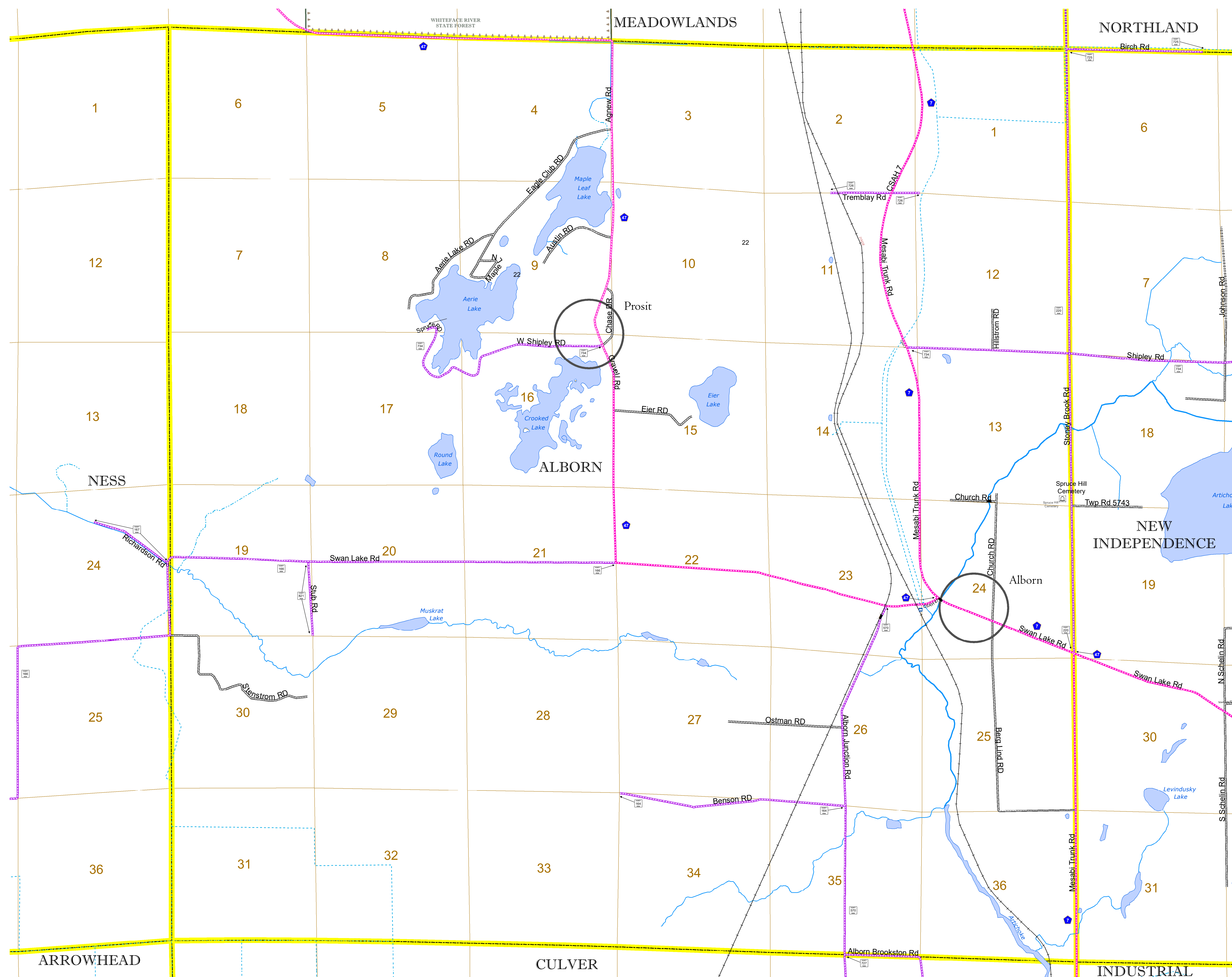


North American Datum  
of 1986

ROAD AND ROADWAY FEATURES		AVIATION FEATURES	
INTERSTATE	CONCRETE	COMMERCIAL AIRPORT	GENERAL AIRPORT
US HIGHWAY	BITUMINOUS	AIRSTRIP	SEAPLANE
MN HIGHWAY	GRAVEL	AIRPORT RUNWAY	BOUNDARY FEATURES
COUNTY STATE AID HIGHWAY	DIRT/UNIMPROVED	TRIBAL LAND	STATE OF MINNESOTA
COUNTY ROAD	OTHER	COUNTY	MUNICIPALITY
TOWNSHIP ROAD	UNKNOWN	UNORGANIZED TERRITORY	FEDERAL ADJUSTED URBAN AREA (2014)
UNORGANIZED TERRITORY ROAD		CIVIL TOWNSHIP	CONGRESSIONAL TOWNSHIP
OTHER ROADS		SECTION	MILITARY
MUNICIPAL	RAMP OR CONNECTOR	VOYAGEURS NATIONAL PARK	BOUNDARY WATERS CANOE AREA WILDERNESS
PRIVATE	INTERSTATE EXIT	STATE PARK	REGIONAL PARK
NATIVE SERVICE		NATIONAL FOREST	NATIONAL AND STATE FOREST
MULTIUSE		STATE FOREST	WILDLIFE REFUGUE AREA
		WILDLIFE MANAGEMENT AREA	HYDROLOGIC FEATURES
		RIVER OR STREAM (PERENNIAL)	LAKE, POND OR RESERVOIR
		STREAM (INTERMITTENT)	DRAINAGE DITCH
		WETLAND	ISLAND OR LAND
		REGIONAL WATERSHED	



Population (U.S. Census 2010): 460



To request information from this document in an alternative format, call 651-366-4718 or 1-800-657-3774 (Greater Minnesota); 711 or 1-800-627-3529 (Minnesota Relay). You may also send an e-mail to ADAREquest.dot@state.mn.us. (Please request at least one week in advance.)