

# TOWNSHIP OF EAGLES NEST

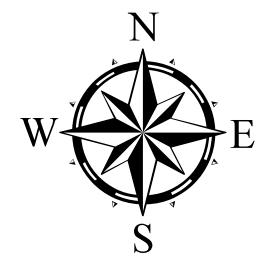
PREPARED BY THE  
MINNESOTA DEPARTMENT OF TRANSPORTATION  
OFFICE OF TRANSPORTATION SYSTEM MANAGEMENT

IN COOPERATION WITH  
U.S. DEPARTMENT OF TRANSPORTATION  
FEDERAL HIGHWAY ADMINISTRATION

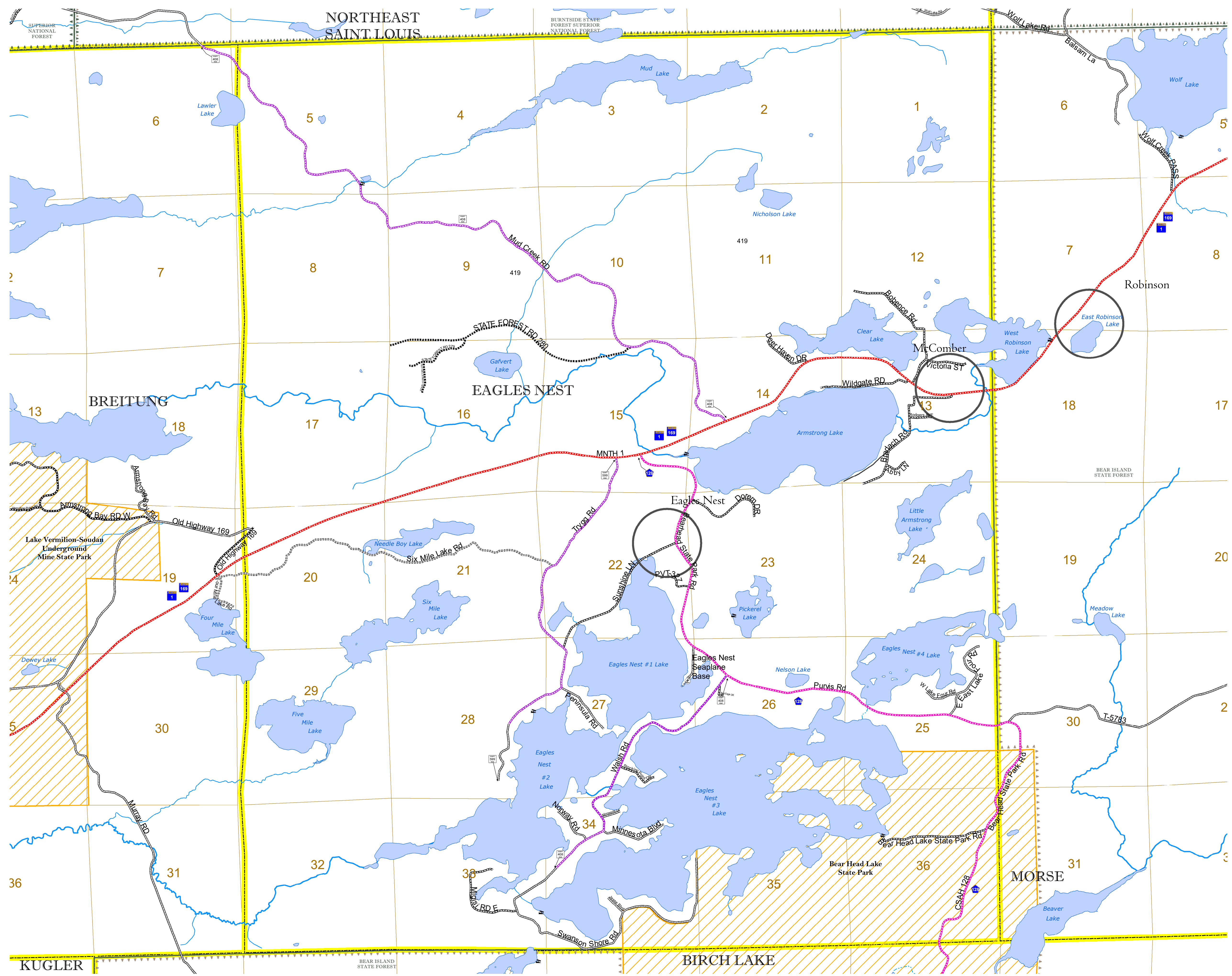


2022

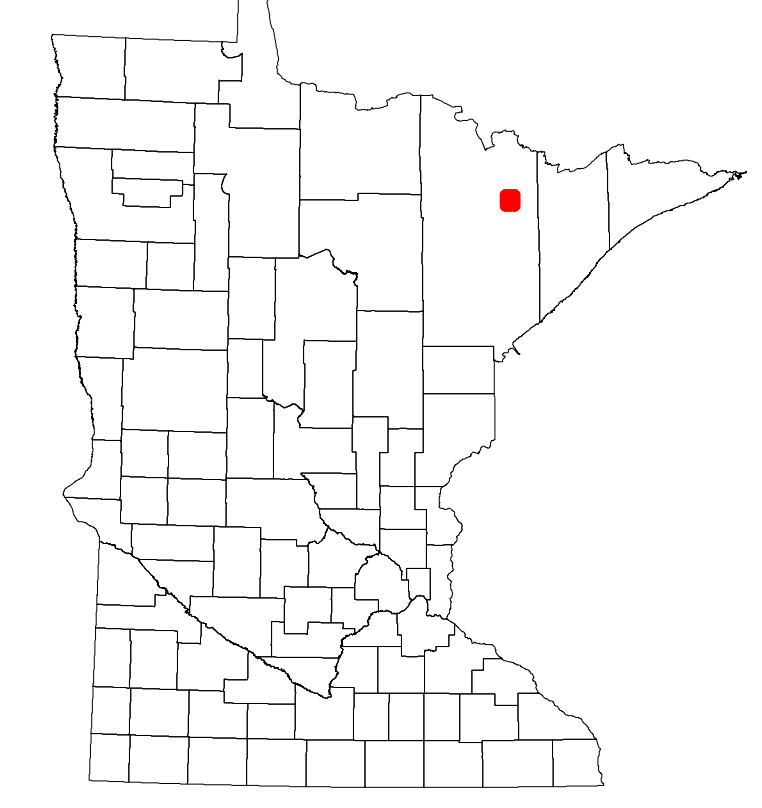
Projection:  
Transverse Mercator  
NAD 1986  
UTM Zone 15



North American Datum  
of 1986



ROAD AND ROADWAY FEATURES	RAILROAD AND RAILWAY FEATURES	AVIATION FEATURES	BOUNDARY FEATURES
INTERSTATE	EMPIRE BUILDER STATION (AMTRAK)	COMMERCIAL AIRPORT	TRIBAL LAND
US HIGHWAY	NORTHSTAR STATION (COMPUTER)	GENERAL AIRPORT	STATE OF MINNESOTA
MN HIGHWAY	LIGHT RAIL	AIRSTRIP	COUNTY
COUNTY STATE AID HIGHWAY	BLUE LINE	SEAPLANE	MUNICIPALITY
COUNTY ROAD	GREEN LINE	AIRPORT RUNWAY	UNORGANIZED TERRITORY
TOWNSHIP ROAD	LONG BRIDGE (200' OR GREATER SPAN)		FEDERAL ADJUSTED URBAN AREA (2014)
UNORGANIZED TERRITORY ROAD	MAJOR BRIDGE (20' TO 200' SPAN)		CIVIL TOWNSHIP
OTHER ROADS	MINOR BRIDGE (5' TO 20' SPAN)		CONGRESSIONAL TOWNSHIP
MUNICIPAL	DAM		SECTION
PRIVATE	LOCK AND DAM		MILITARY
NATIONAL MONUMENT			VOYAGEURS NATIONAL PARK
NATIONAL FOREST			BOUNDARY WATERS CANOE AREA WILDERNESS
NATIONAL WILDLIFE REFUGUE			STATE PARK
STATE FOREST			REGIONAL PARK
STATE PARK			NATIONAL FOREST
			NATIONAL AND STATE FOREST
			STATE FOREST
			NATIONAL TRAIL
			WILDLIFE REFUGE AREA
			WILDLIFE MANAGEMENT AREA
			RIVER OR STREAM (PERENNIAL)
			LAKE, POND OR RESERVOIR
			STREAM (INTERMITTENT)
			DRAINAGE DITCH
			WETLAND
			ISLAND OR LAND
			REGIONAL WATERSHED



Population (U.S. Census 2010): 242

To request information from this document in an alternative format, call 651-366-4718 or 1-800-657-3774 (Greater Minnesota); 711 or 1-800-627-3529 (Minnesota Relay). You may also send an e-mail to ADAREquest.dot@state.mn.us. (Please request at least one week in advance.)