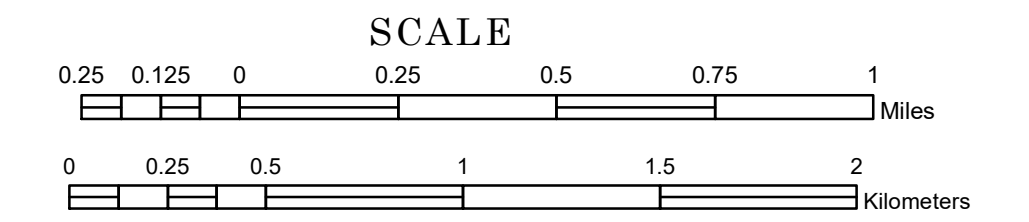


TOWNSHIP OF BERLIN

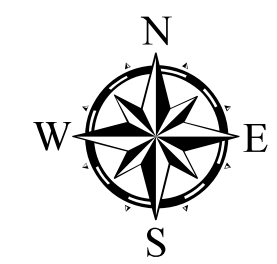
PREPARED BY THE
MINNESOTA DEPARTMENT OF TRANSPORTATION
OFFICE OF TRANSPORTATION SYSTEM MANAGEMENT

IN COOPERATION WITH
U.S. DEPARTMENT OF TRANSPORTATION
FEDERAL HIGHWAY ADMINISTRATION



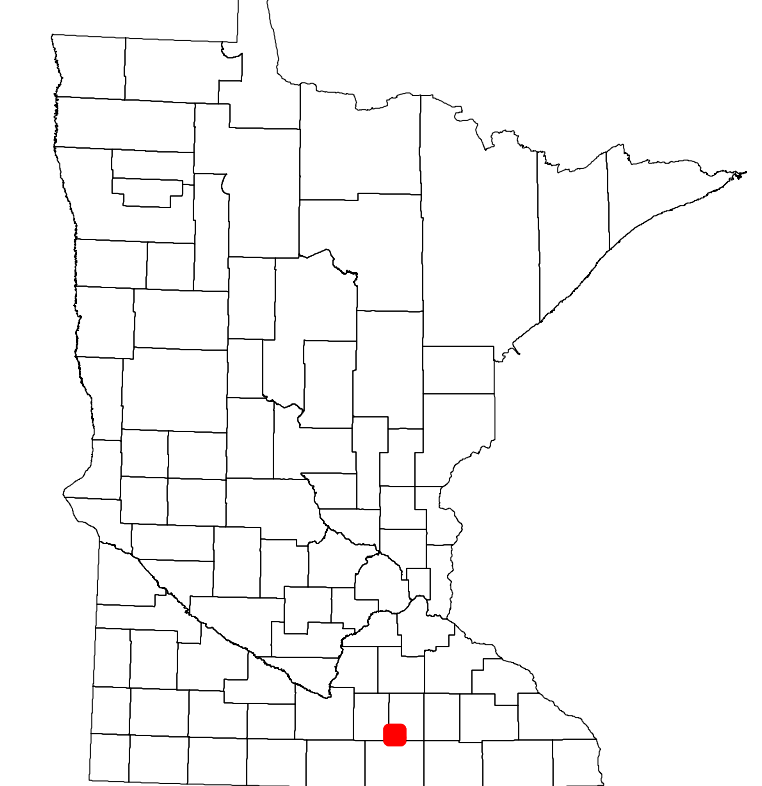
2022

Projection:
Transverse Mercator
NAD 1986
UTM Zone 15

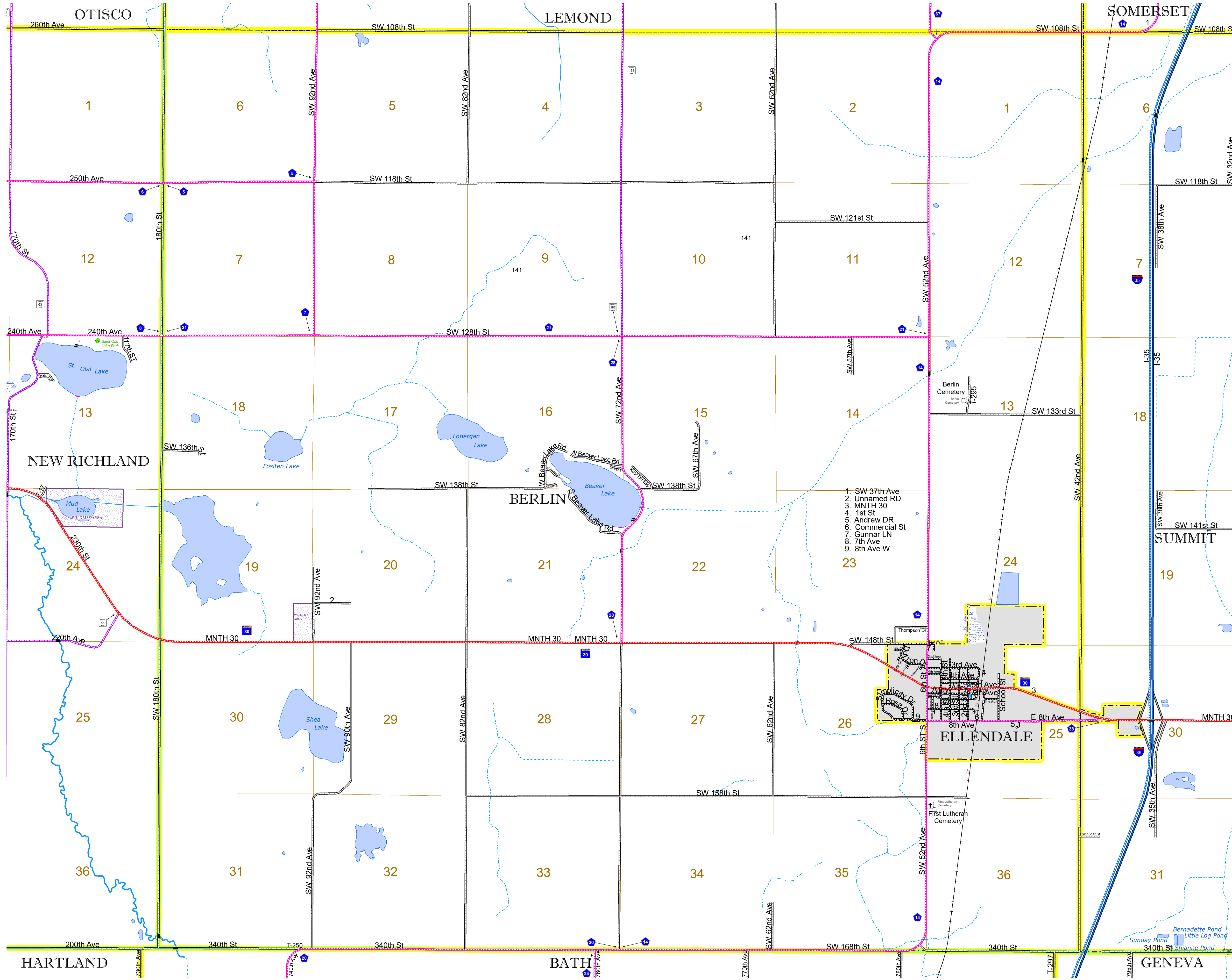


North American Datum
of 1986

ROAD AND ROADWAY FEATURES		AVIATION FEATURES	
INTERSTATE	CONCRETE	COMMERCIAL AIRPORT	GENERAL AIRPORT
US HIGHWAY	BITUMINOUS	AIRSTRIP	SEAPLANE
MN HIGHWAY	GRAVEL	AIRPORT RUNWAY	BOUNDARY FEATURES
COUNTY STATE AID HIGHWAY	DIRT/UNIMPROVED	TRIAL LAND	TRIBAL LAND
COUNTY ROAD	OTHER	STATE OF MINNESOTA	COUNTY
TOWNSHIP ROAD	UNKNOWN	MUNICIPALITY	MUNICIPALITY
UNORGANIZED TERRITORY ROAD		UNORGANIZED TERRITORY	UNORGANIZED TERRITORY
OTHER ROADS		FEDERAL ADJUSTED URBAN AREA (2014)	CIVIL TOWNSHIP
Municipal	RAMP OR CONNECTOR	CONGRESSIONAL TOWNSHIP	SECTION
Private	INTERSTATE EXIT	MILITARY	MILITARY
National Monument	AVIATION FEATURES	VOYAGEURS NATIONAL PARK	VOYAGEURS NATIONAL PARK
State Forest	COMMERCIAL AIRPORT	BOUNDARY WATERS CANOE AREA WILDERNESS	STATE PARK
State Game	GENERAL AIRPORT	STATE PARK	REGIONAL PARK
National Park	AIRSTRIP	STATE PARK	NATIONAL FOREST
National Wildlife Refuge	SEAPLANE	STATE FOREST	NATIONAL AND STATE FOREST
State Park	AIRPORT RUNWAY	STATE FOREST	STATE FOREST
Preserve	BOUNDARY FEATURES	WILDLIFE REFUGE AREA	WILDLIFE REFUGE AREA
	TRIBAL LAND	WILDLIFE MANAGEMENT AREA	WILDLIFE MANAGEMENT AREA
	STATE OF MINNESOTA	HYDROLOGIC FEATURES	HYDROLOGIC FEATURES
	COUNTY	RIVER OR STREAM (PERMANENT)	RIVER OR STREAM (PERMANENT)
	MUNICIPALITY	LAKE, POND OR RESERVOIR	LAKE, POND OR RESERVOIR
	UNORGANIZED TERRITORY	STREAM (INTERMITTENT)	STREAM (INTERMITTENT)
	FEDERAL ADJUSTED URBAN AREA (2014)	DRAINAGE DITCH	DRAINAGE DITCH
	CIVIL TOWNSHIP	WETLAND	WETLAND
	CONGRESSIONAL TOWNSHIP	ISLAND OR LAND	ISLAND OR LAND
	SECTION	REGIONAL WATERSHED	REGIONAL WATERSHED
	MILITARY		
	VOYAGEURS NATIONAL PARK		
	BOUNDARY WATERS CANOE AREA WILDERNESS		
	STATE PARK		
	REGIONAL PARK		
	NATIONAL FOREST		
	NATIONAL AND STATE FOREST		
	STATE FOREST		
	WILDLIFE REFUGE AREA		
	WILDLIFE MANAGEMENT AREA		
	HYDROLOGIC FEATURES		
	RIVER OR STREAM (PERMANENT)		
	LAKE, POND OR RESERVOIR		
	STREAM (INTERMITTENT)		
	DRAINAGE DITCH		
	WETLAND		
	ISLAND OR LAND		
	REGIONAL WATERSHED		



Population (U.S. Census 2010): 519



To request information from this document in an alternative format, call 651-366-4718 or 1-800-657-3774 (Greater Minnesota); 711 or 1-800-627-3529 (Minnesota Relay). You may also send an e-mail to ADarequest.dot@state.mn.us. (Please request at least one week in advance.)