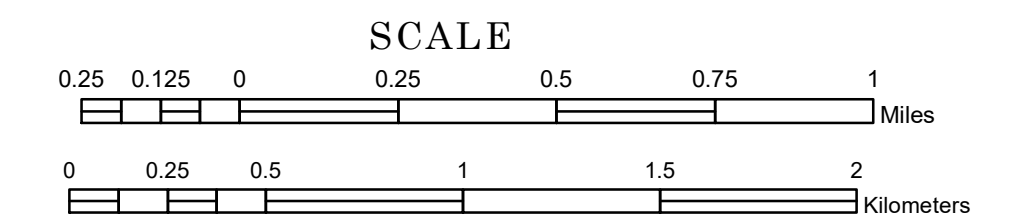


TOWNSHIP OF NORTH GERMANY

PREPARED BY THE
MINNESOTA DEPARTMENT OF TRANSPORTATION
OFFICE OF TRANSPORTATION SYSTEM MANAGEMENT

IN COOPERATION WITH
U.S. DEPARTMENT OF TRANSPORTATION
FEDERAL HIGHWAY ADMINISTRATION



1 in = 1,600 ft

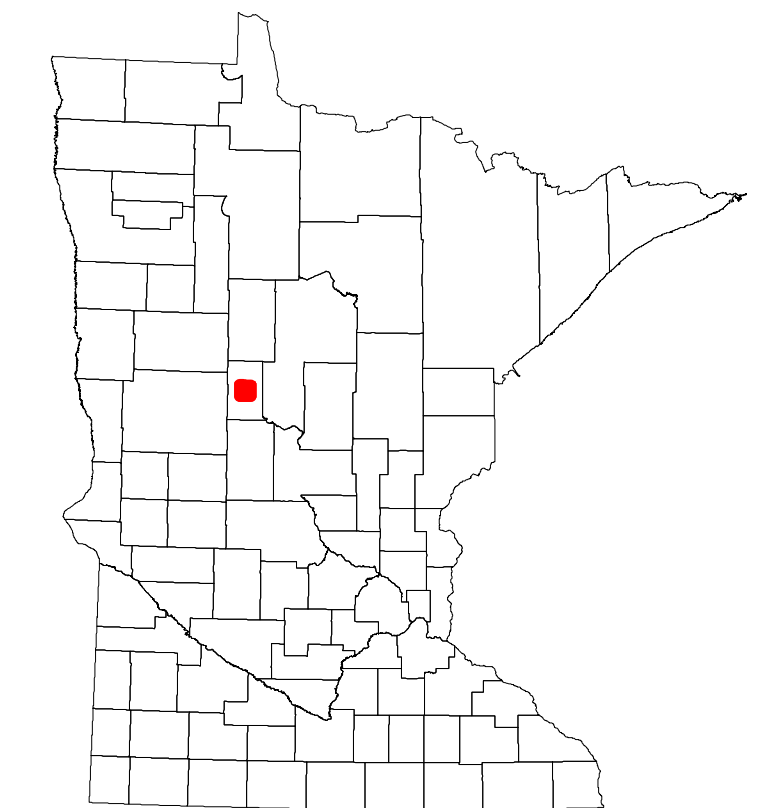
2023

Projection:
Transverse Mercator
NAD 1986
UTM Zone 15

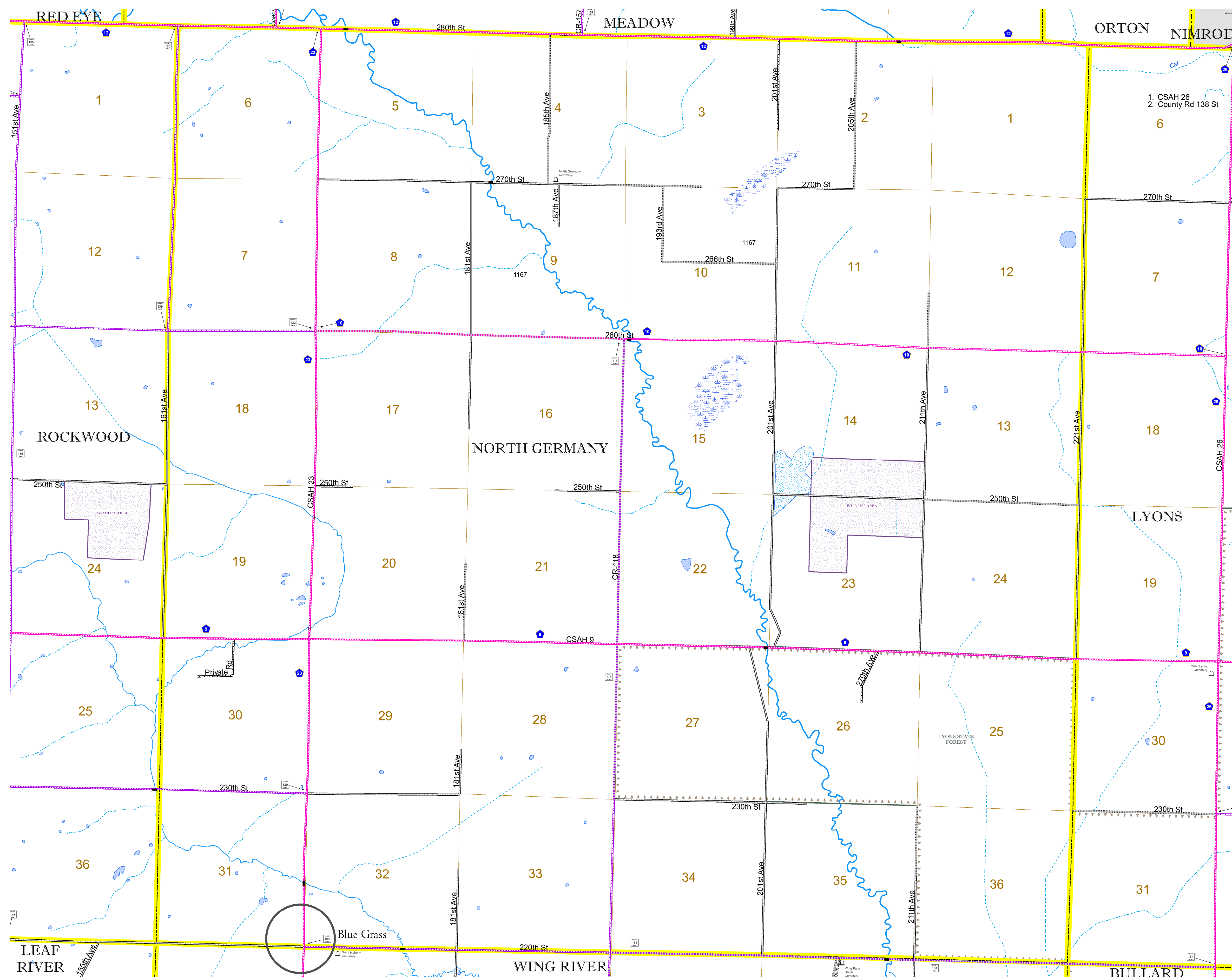


North American Datum
of 1986

ROAD AND ROADWAY FEATURES		RAILROAD AND RAILWAY FEATURES		AVIATION FEATURES		BOUNDARY FEATURES	
INTERSTATE	CONCRETE	EMPIRE BUILDER STATION (AMTRAK)	COMMERCIAL AIRPORT	TRIBAL LAND	STATE OF MINNESOTA	CITY CENTER	SECTION
US HIGHWAY	BITUMINOUS	NORTHSTAR STATION (COMMUTER)	GENERAL AIRPORT	STATE OF MINNESOTA	COUNTY	CITY CENTER	MILITARY
MN HIGHWAY	GRAVEL	LIGHT RAIL	AIRSTRIP	STATE OF MINNESOTA	COUNTY	CITY CENTER	VOYAGEURS NATIONAL PARK
COUNTY STATE AID HIGHWAY	DIRT/UNIMPROVED	BLUE LINE	SEAPLANE	STATE OF MINNESOTA	COUNTY	CITY CENTER	BOUNDARY WATERS CANOE AREA WILDERNESS
COUNTY ROAD	OTHER	GREEN LINE	AIRPORT RUNWAY	STATE OF MINNESOTA	COUNTY	CITY CENTER	STATE PARK
TOWNSHIP ROAD	UNKNOWN	LONG BRIDGE (200' OR GREATER SPAN)		STATE OF MINNESOTA	COUNTY	CITY CENTER	REGIONAL PARK
UNORGANIZED TERRITORY ROAD		MAJOR BRIDGE (20' TO 200' SPAN)		STATE OF MINNESOTA	COUNTY	CITY CENTER	NATIONAL FOREST
OTHER ROADS		MINOR BRIDGE (5' TO 20' SPAN)		STATE OF MINNESOTA	COUNTY	CITY CENTER	NATIONAL AND STATE FOREST
Municipal		DAM		STATE OF MINNESOTA	COUNTY	CITY CENTER	STATE FOREST
Private		LOCK AND DAM		STATE OF MINNESOTA	COUNTY	CITY CENTER	WILDLIFE REFUGE AREA
National Monument				STATE OF MINNESOTA	COUNTY	CITY CENTER	WILDLIFE MANAGEMENT AREA
State Forest				STATE OF MINNESOTA	COUNTY	CITY CENTER	HYDROLOGIC FEATURES
State Game				STATE OF MINNESOTA	COUNTY	CITY CENTER	RIVER OR STREAM (PERENNIAL)
State Park				STATE OF MINNESOTA	COUNTY	CITY CENTER	LAKE, POND OR RESERVOIR
Preserve				STATE OF MINNESOTA	COUNTY	CITY CENTER	STREAM (INTERMITTENT)
				STATE OF MINNESOTA	COUNTY	CITY CENTER	DRAINAGE DITCH
				STATE OF MINNESOTA	COUNTY	CITY CENTER	WETLAND
				STATE OF MINNESOTA	COUNTY	CITY CENTER	ISLAND OR LAND MONUMENT
				STATE OF MINNESOTA	COUNTY	CITY CENTER	REGIONAL WATERSHED



Population (U.S. Census 2010): 313



To request information from this document in an alternative format, call 651-366-4718 or 1-800-657-3774 (Greater Minnesota); 711 or 1-800-627-3529 (Minnesota Relay). You may also send an e-mail to ADARquest.dot@state.mn.us. (Please request at least one week in advance.)