

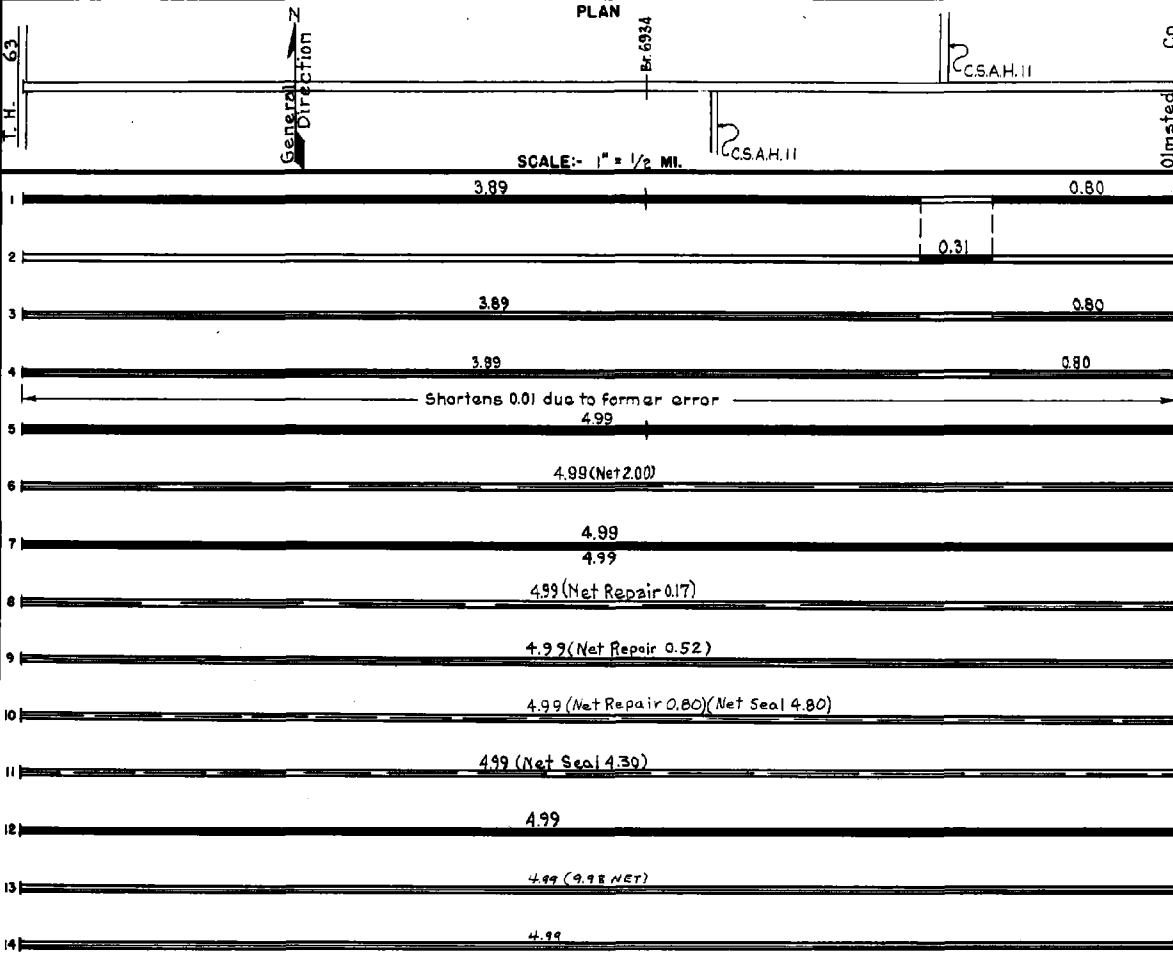
PREPARED BY
HIGHWAY PLANNING SURVEY
IN COOPERATION WITH
U.S. PUBLIC ROADS ADMINISTRATION

STATE OF MINNESOTA
DEPARTMENT OF HIGHWAYS
ROAD LIFE STUDIES
CONSTRUCTION PROJECT LOG RECORD

CONTROL SECTION 5512
TRUNK HIGHWAY 247
COUNTY Olmsted
DISTRICT 6A

LIMITS: Jct. T.H. 63 - E. Co. Line

YEAR BUILT	PROJECT N°	DESCRIPTION			CODE N°
		TYPE	WIDTH	THICKNESS	
		Gravel Br. 6934	32'		No Record of Const. Added in 1949 M108D
		Mixed Bit.	24'		No Record of Const. Added in 1949
M 1949	A.F.E. 6	Crushed Rock Resurfacing			1376 Tons
M 1951	A.F.E. 6	Crushed Rock Resurfacing	25'		2351 Tons
C 1953 (1)	5512-01	Grading Crushed Rock Ext. M108D (Br. 6934)	32' 34'		1200 C.Y./Mi.
M 1954	A.F.E. 606	Cr. Rock Rasurf. (Spots)			834 Tons
C 1955	5512-03	Gravel Base Plant Mix Bit.	30' 9" 24' 1 1/2"		
M 1962		Spot Treat Bit. Surf. Repair	24'		MC-2 144 Gal. Pl. Mix 68 Tons
M 1963		Light Bit Seal Spot Treat Bit. Surf. Repair	25' 24'		RS-2K, 8471 Gal. Seal Agg. 311 C.Y. Bit. Mix 182 Tons
M 1967	SF c	Bit. Surface Repair Light Bit. Seal	24' 3/4" 25'		Bit. Mix 170 Ton CRS-1 Bit. 9,600 Gal. FA-1 Agg. 300 C.Y.
M 1969	SF	Bit. Seal Coat	24'		RC-250 9,048 Gal. Agg. 305 C.Y.
C 1970	5512-04	Pl. Mix Bit. Surf. Gravel Shldr.	24' 3"		
M 1976	SF	Re-Rock Shoulder	2' 2"		2120 Cu.Yd.
M 1978	SF	SAND SEAL COAT	24'		CAS-1 24682 GAL SAND 1750 Cu.Yd.



YEARS FROM	TO	TOTAL MILES	UNINCORPORATED		INCORPORATED		RURAL		URBAN	
			RDWY. MI.	BR. MI.	RDWY. MI.	BR. MI.	RDWY. MI.	BR. MI.	RDWY. MI.	BR. MI.
1949	1952	5.00	5.00	0.00	0.00	0.00	5.00	0.00	0.00	0.00
1953		4.99	4.99	0.00	0.00	0.00	4.99	0.00	0.00	0.00

REMARKS: Layout is to scale as of 1949
(1) Contract not final but work substantially complete

